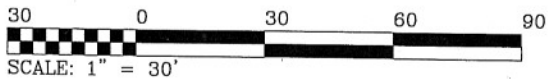
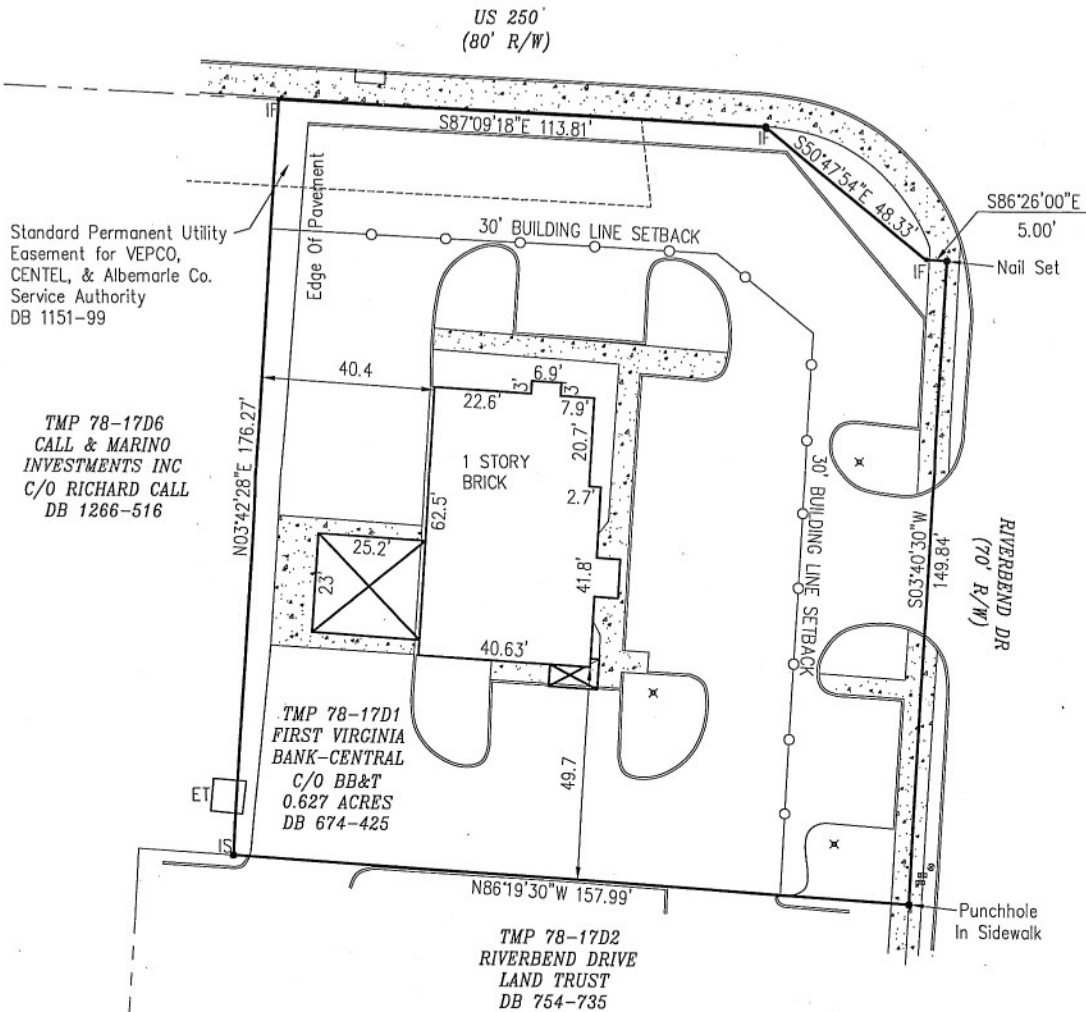
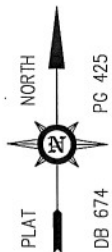


Notes:

1. Survey performed for Parkway Place LLC

- LEGEND**
- IS Iron Rod Set
 - IF Iron Rod Found
 - x Light Pole
 - ⊗ Water Meter
 - ⊕ Water Valve
 - ET Electric Transformer



**DDominion
DDevelopment
Resources, LLC**

172 South Pantops Drive
Charlottesville, VA 22911
434.979.8121 (p)
434.979.1681 (f)
DORVA.com

engineers
surveyors
planners
architects

PLAT SHOWING BOUNDARY SURVEY OF
TAX MAP 78 PARCEL 17-D1
BB&T BANK
RIVANNA DISTRICT, ALBEMARLE COUNTY, VIRGINIA
SCALE: 1" = 30' SHEET 1 of 1
FILE:78-17-D1.DWG DATE: OCTOBER 25, 2007