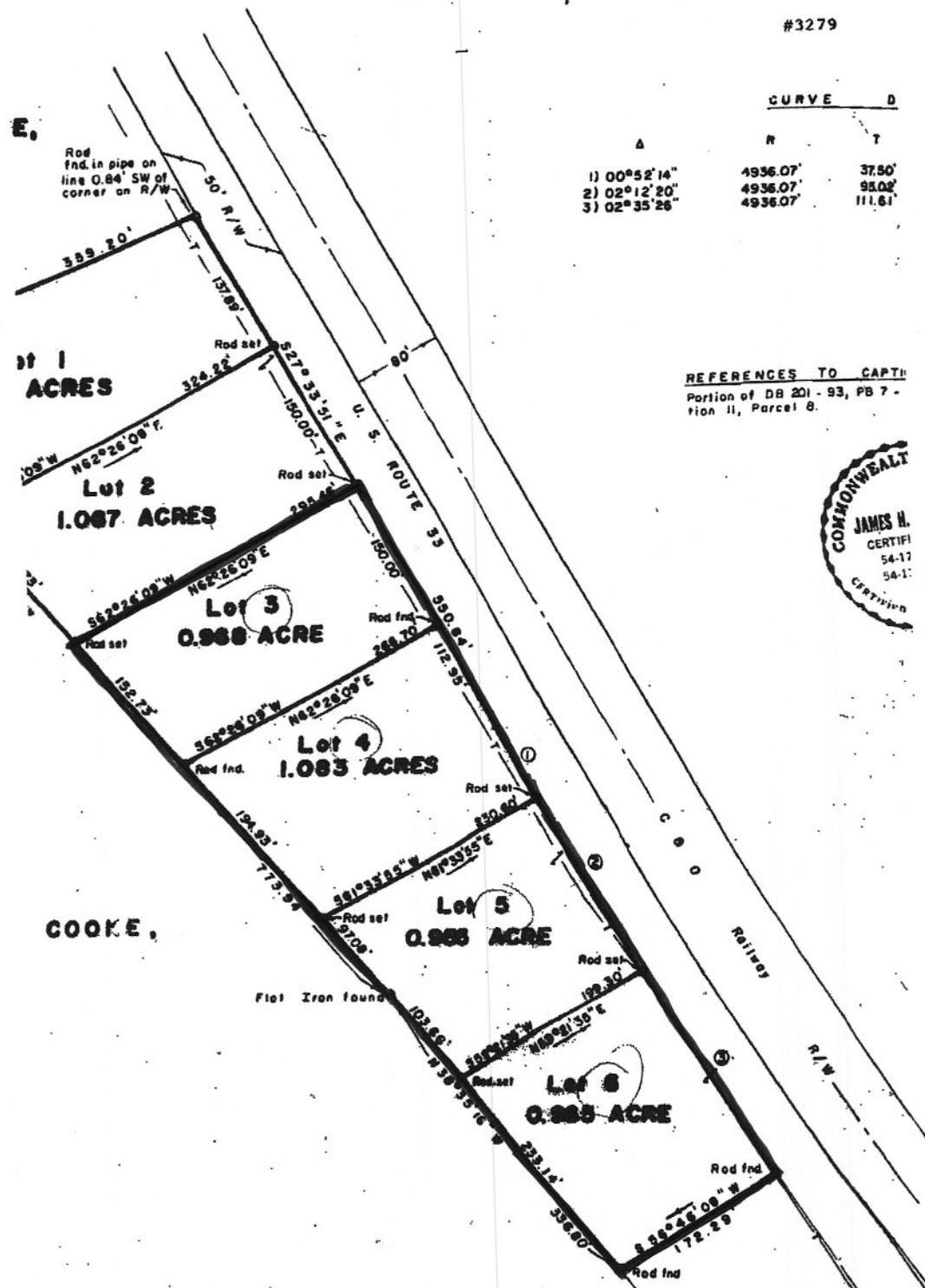


#3279



CURVE D		
A	R	T
1) 00°52'14"	4936.07'	37.50'
2) 02°12'20"	4936.07'	98.02'
3) 02°35'26"	4936.07'	111.61'

REFERENCES TO CAPT:
 Portion of DB 201 - 93, PB 7 -
 tion II, Parcel 8.



Survey of Six Lots being
 in of Lots 1A, 1B, 2A, & 2B
 ing in the Name of
ORE & HELEN H. POORE
 d on U. S. Route 33
 iles Southeast of Gordonsville
 istrict, Louisa County, Virginia
 8 November 1979

EARL W. POORE
 DB 201 - 93
 PB 7 - 2



copy of iron map 10
 area of same map
 12/11/2006 13:33 4348235581