

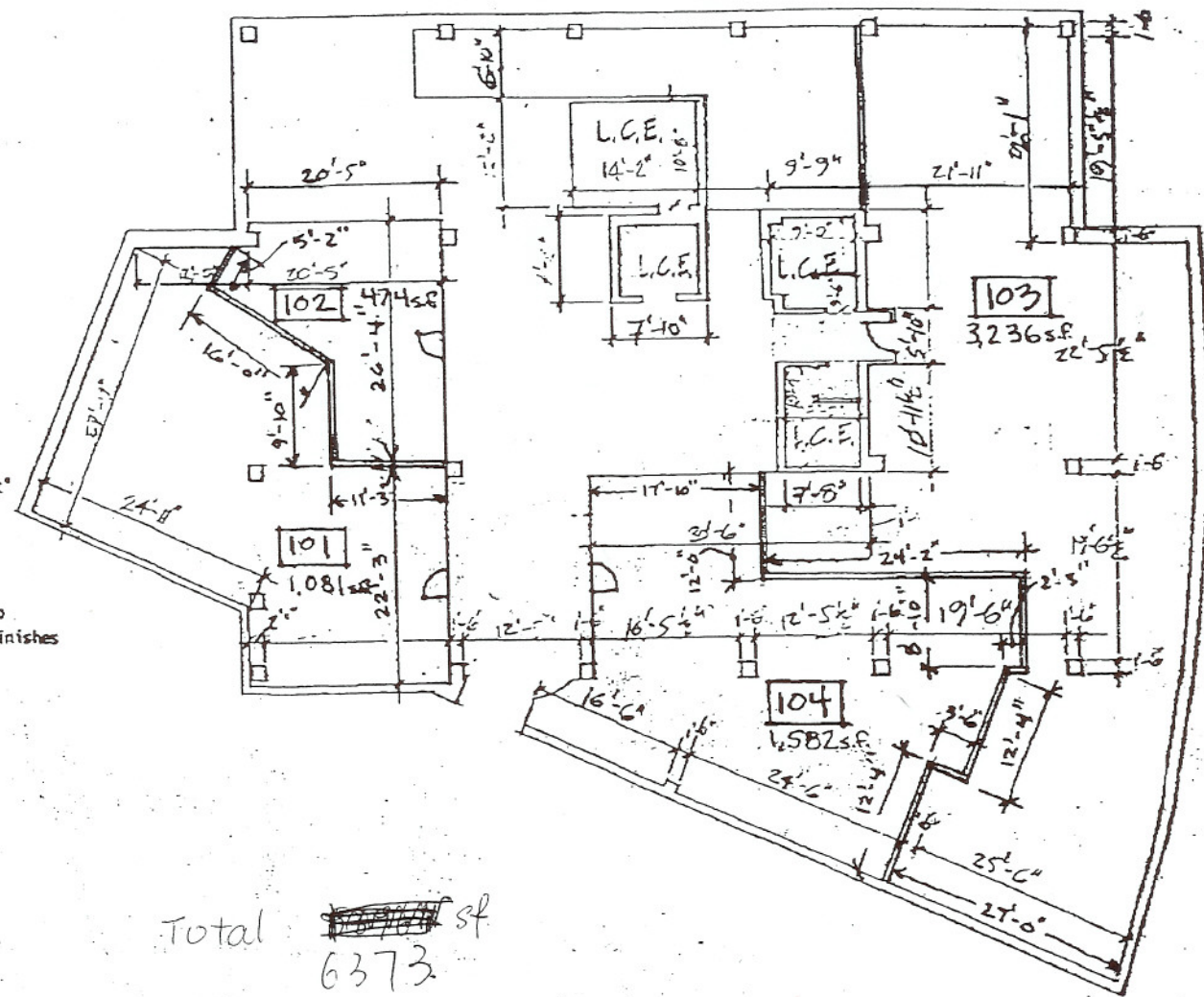
Exhibit 1

NOTES

- 1) L.C.E. indicates "Limited Common Element"
- 2) C.S. indicates "Convertible Space"
- 3) Areas not labeled are "Common Elements"
- 4) Dimensions are taken to backside of interior finishes

I DO HEREBY CERTIFY THAT THESE PLANS ARE ACCURATE AND THEY COMPLY WITH SECTION 55-79.52(b) OF THE CODE OF VIRGINIA AS AMENDED, AND ALL UNITS DEPICTED HEREON ARE SUBSTANTIALLY COMPLETE.

**RJF**  
 RICHARD J. FORD, JR.  
 REG. NO. 1423



Total ~~10,770~~ sq ft  
 6373

LEWIS & CLARK SQUARE 9049  
 CHARLOTTESVILLE, VA. FIRST FLOOR