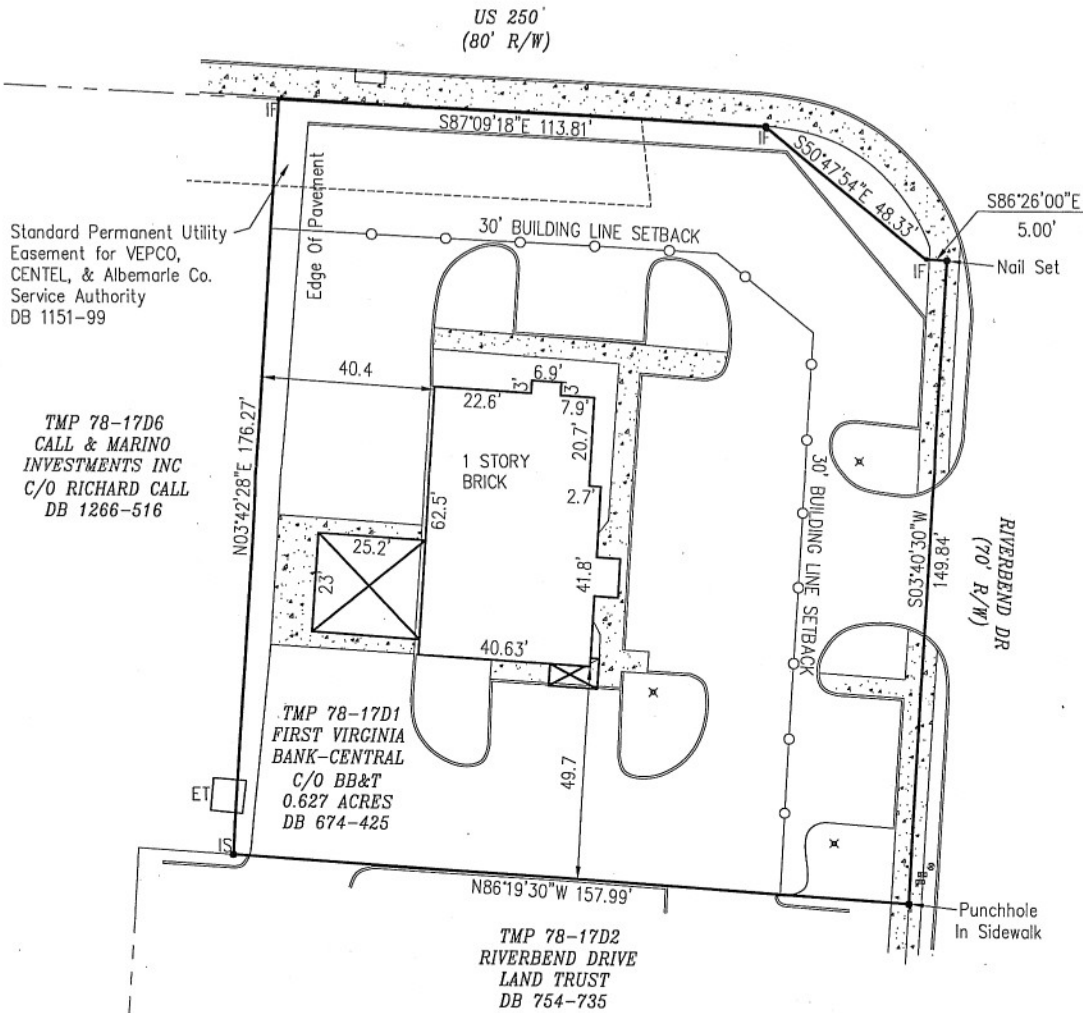
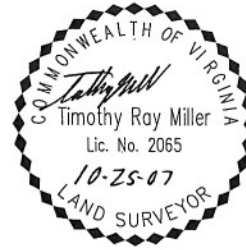
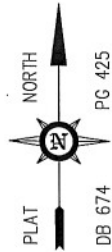


Notes:

1. Survey performed for Parkway Place LLC

- LEGEND**
- IS Iron Rod Set
 - IF Iron Rod Found
 - x Light Pole
 - ⊠ Water Meter
 - ⊙ Water Valve
 - ET Electric Transformer

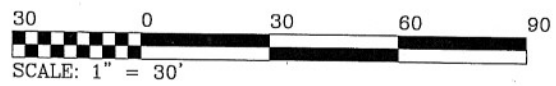


Standard Permanent Utility Easement for VEPCO, CENTEL, & Albemarle Co. Service Authority DB 1151-99

TMP 78-17D6
CALL & MARINO
INVESTMENTS INC
C/O RICHARD CALL
DB 1266-516

TMP 78-17D1
FIRST VIRGINIA
BANK-CENTRAL
C/O BB&T
0.627 ACRES
DB 674-425

TMP 78-17D2
RIVERBEND DRIVE
LAND TRUST
DB 754-735



PLAT SHOWING BOUNDARY SURVEY OF
TAX MAP 78 PARCEL 17-D1
BB&T BANK
RIVANNA DISTRICT, ALBEMARLE COUNTY, VIRGINIA
SCALE: 1" = 30' SHEET 1 of 1
FILE:78-17-D1.DWC DATE: OCTOBER 25, 2007