

LINE	BEARING	DISTANCE
1	N77°56'17"E	50.85'
2	N17°30'01"W	31.27'
3	N17°30'01"W	25.11'

← to Louisa

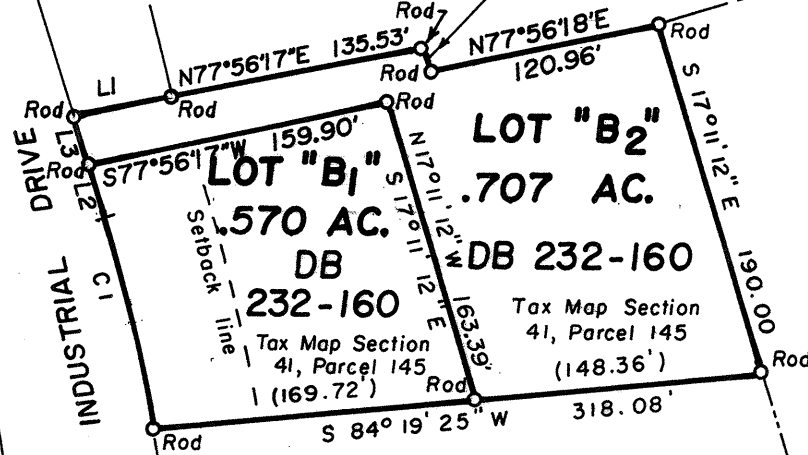
STATE ROUTE 22 & 208

INDUSTRIAL DEVELOPMENT AUTHORITY OF LOUISA CO. DB 232 - 160

Lot "A"
1.400 Acres

Well Lot

S 12°03'42" E
15.00'



LOT "B1"
570 AC.
DB 232-160

LOT "B2"
.707 AC.
DB 232-160

WATER TANK

JAMES H. BELL, JR.
et al
PB 7-136

WEST CIRCLE

INDUSTRIAL DRIVE
STATE ROUTE 780

T - D ASSOCIATES
DB 270 - 255

Plot of Lots "B1" & "B2"
belonging to the

INDUSTRIAL DEVELOPMENT AUTHORITY OF LOUISA COUNTY

Louisa District, Louisa County, Virginia
Scale: 1" = 100' 27 February 1992

CURVE DATA

PB 7 - 136

①

Lot 4

- Δ = 007° 58' 09"
- R = 811.45'
- T = 56.52'
- L = 112.86'
- C = N 13° 30' 56" W
112.77'

