

Virginia Grid North



# Property Line Adjustment Plan

Standing in the Name of  
**East Side Investors, LLC.**

Town of Louisa, Louisa County  
Virginia

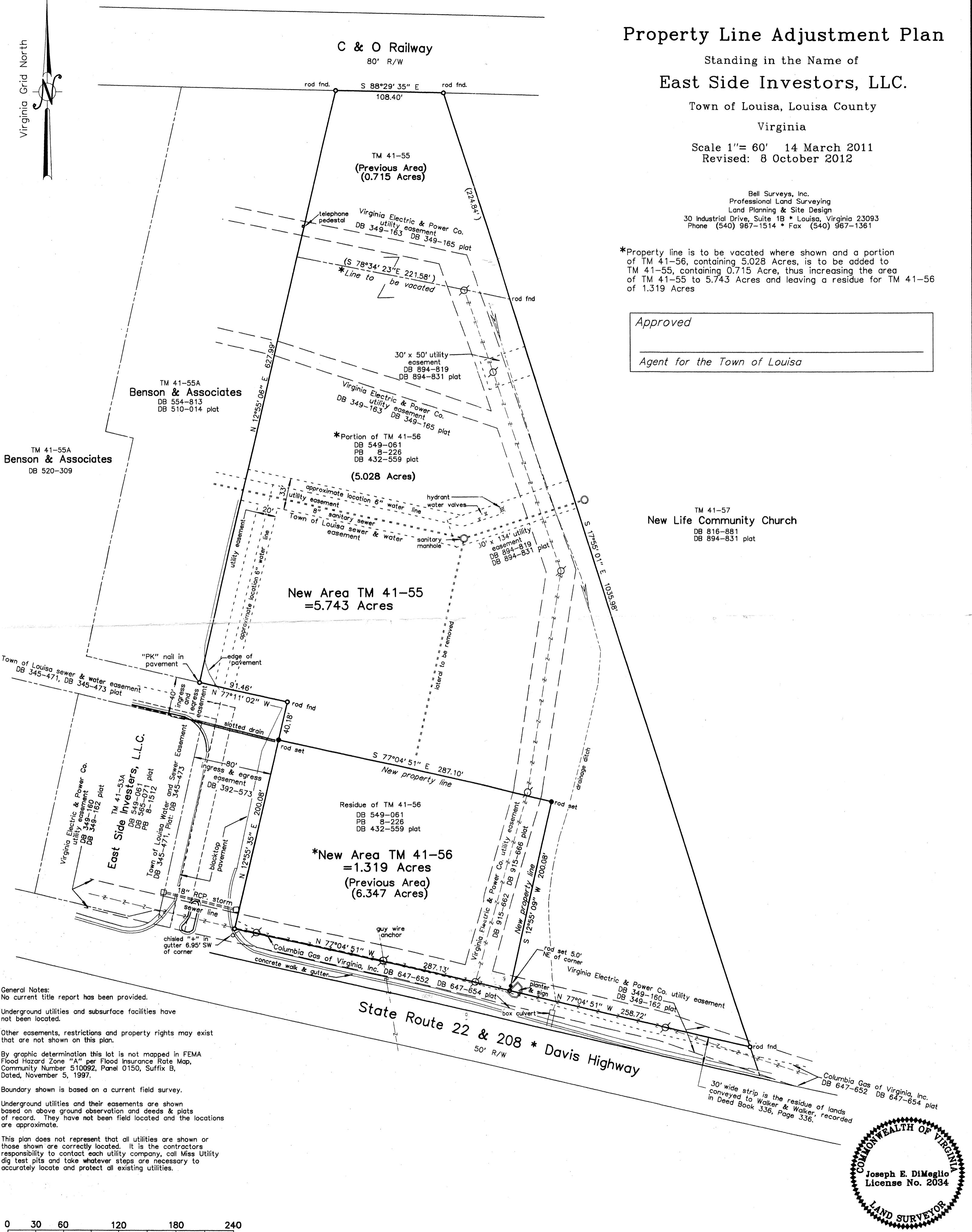
Scale 1" = 60' 14 March 2011  
Revised: 8 October 2012

Bell Surveys, Inc.  
Professional Land Surveying  
Land Planning & Site Design  
30 Industrial Drive, Suite 1B \* Louisa, Virginia 23093  
Phone (540) 967-1514 \* Fax (540) 967-1361

\*Property line is to be vacated where shown and a portion of TM 41-56, containing 5.028 Acres, is to be added to TM 41-55, containing 0.715 Acres, thus increasing the area of TM 41-55 to 5.743 Acres and leaving a residue for TM 41-56 of 1.319 Acres

Approved

Agent for the Town of Louisa



General Notes:  
No current title report has been provided.  
Underground utilities and subsurface facilities have not been located.  
Other easements, restrictions and property rights may exist that are not shown on this plan.  
By graphic determination this lot is not mapped in FEMA Flood Hazard Zone "A" per Flood Insurance Rate Map, Community Number 510092, Panel 0150, Suffix B, Dated, November 5, 1997.  
Boundary shown is based on a current field survey.  
Underground utilities and their easements are shown based on above ground observation and deeds & plats of record. They have not been field located and the locations are approximate.  
This plan does not represent that all utilities are shown or those shown are correctly located. It is the contractors responsibility to contact each utility company, call Miss Utility dig test pits and take whatever steps are necessary to accurately locate and protect all existing utilities.

