

Plot Book 1, Page 267.

A PLAT SHOWING A PORTION OF
TAX MAP SECTION 18A, PARCEL (4) - 13A

LAKE CENTRE PROFESSIONAL PARK

CUNNINGHAM DISTRICT, FLUVANNA COUNTY, VIRGINIA

DATE: 9 AUGUST 1998 SCALE: 1" = 30'

GREGORY D. HOSAFLOOK, P.C.
PROFESSIONAL LAND SURVEYOR
498 KENTS STORE ROAD
KENTS STORE, VIRGINIA 23084

LAKE CENTRE
PROFESSIONAL PARK
"Building Blocks Learning Center"

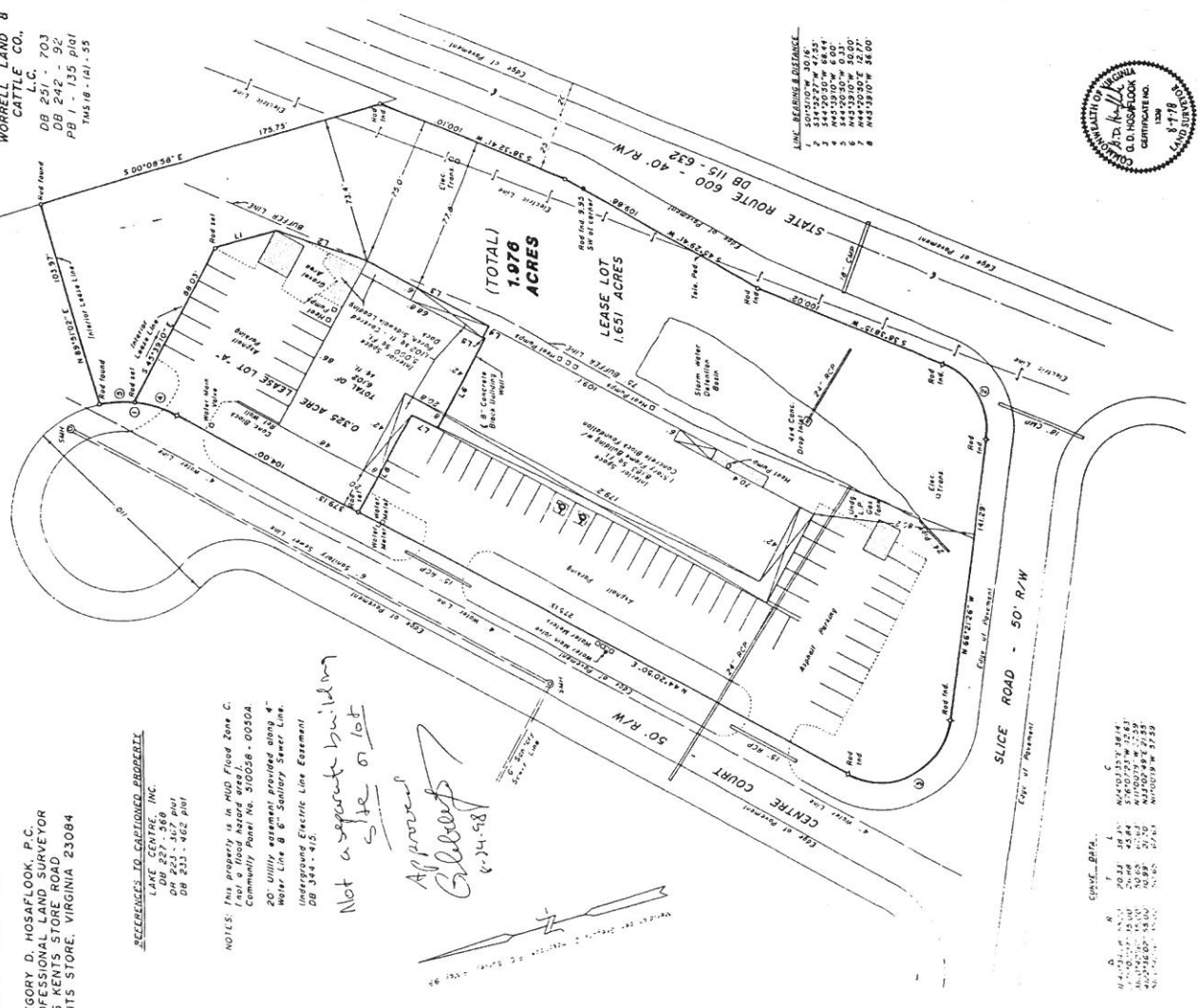
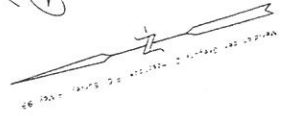
MORRELL LAND 8
CATTLE CO.,
L.C. 703
DB 252 - 92
DB 252 - 92
PB 1 - 135 plat
TMS 18 - 161 - 55

REFERENCES TO CAPTIONED PROJECT
LAKE CENTRE, INC.
DB 252 - 369 plat
DB 252 - 367 plat
DB 233 - 462 plat

NOTES: This property is in Flood Zone C,
(not a Flood Hazard Area),
Community Panel No. 510028 - 00304.
20' utility easement provided along 4"
Water Line & 6" Sanitary Sewer Line.
Underground Electric Line Easement
DB 244 - 415

*Not a separate building
site or lot*

*Approved
Gregory D. Hosaflook
8-24-98*



(TOTAL)
1.976
ACRES

LEASE LOT
1.651 ACRES

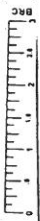
50' R/W

SLICE ROAD - 50' R/W

LINE	BEARING & DISTANCE
1	S 0° 00' 00" W 100.00
2	S 89° 59' 59" W 100.00
3	S 89° 59' 59" W 100.00
4	S 89° 59' 59" W 100.00
5	S 89° 59' 59" W 100.00
6	S 89° 59' 59" W 100.00
7	S 89° 59' 59" W 100.00
8	S 89° 59' 59" W 100.00



LINE	BEARING & DISTANCE
1	S 0° 00' 00" W 100.00
2	S 89° 59' 59" W 100.00
3	S 89° 59' 59" W 100.00
4	S 89° 59' 59" W 100.00
5	S 89° 59' 59" W 100.00
6	S 89° 59' 59" W 100.00
7	S 89° 59' 59" W 100.00
8	S 89° 59' 59" W 100.00



DATE: 8-24-98
GREGORY D. HOSAFLOOK